



mountain

B R E E Z E

Built for weekend living

PLAN BOOK



mountain

BREEZE

Built for weekend living

 Tungarli, Lonavala



Water body touch
at prime location, 3 acres of land parcel
16 Lavish Bungalows.

Disclaimer: The contents of this brochure are purely conceptual and have no legal binding on us. The developers reserve the rights to amend the layout plans, numbers of floor plans, elevation, colour scheme, specifications and amenities etc.

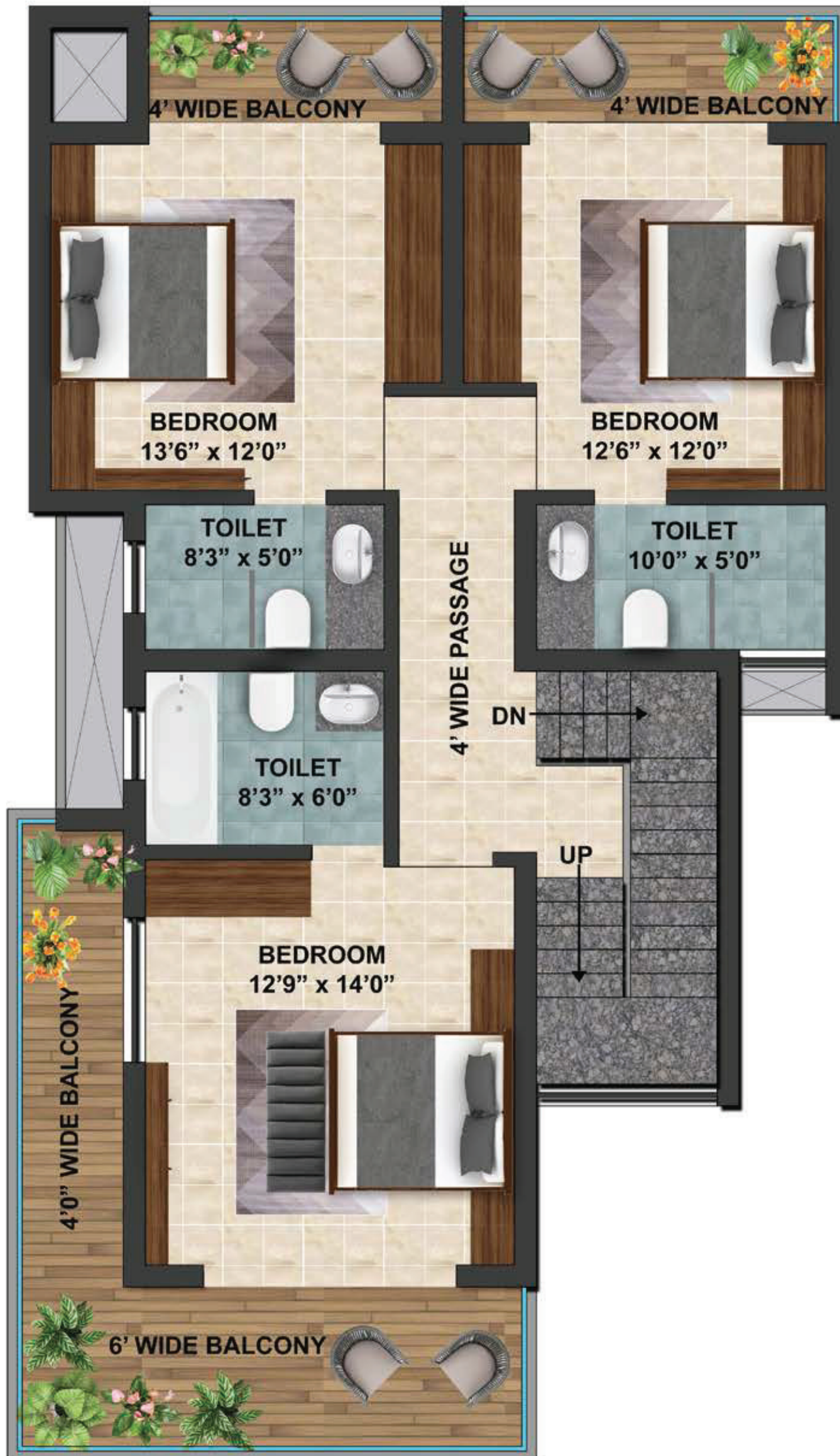
GROUND FLOOR PLAN



AREA STATEMENT

Mountain Breeze - 4 BHK (Type A)	AREA SQ.FT
Total Usable Area	883

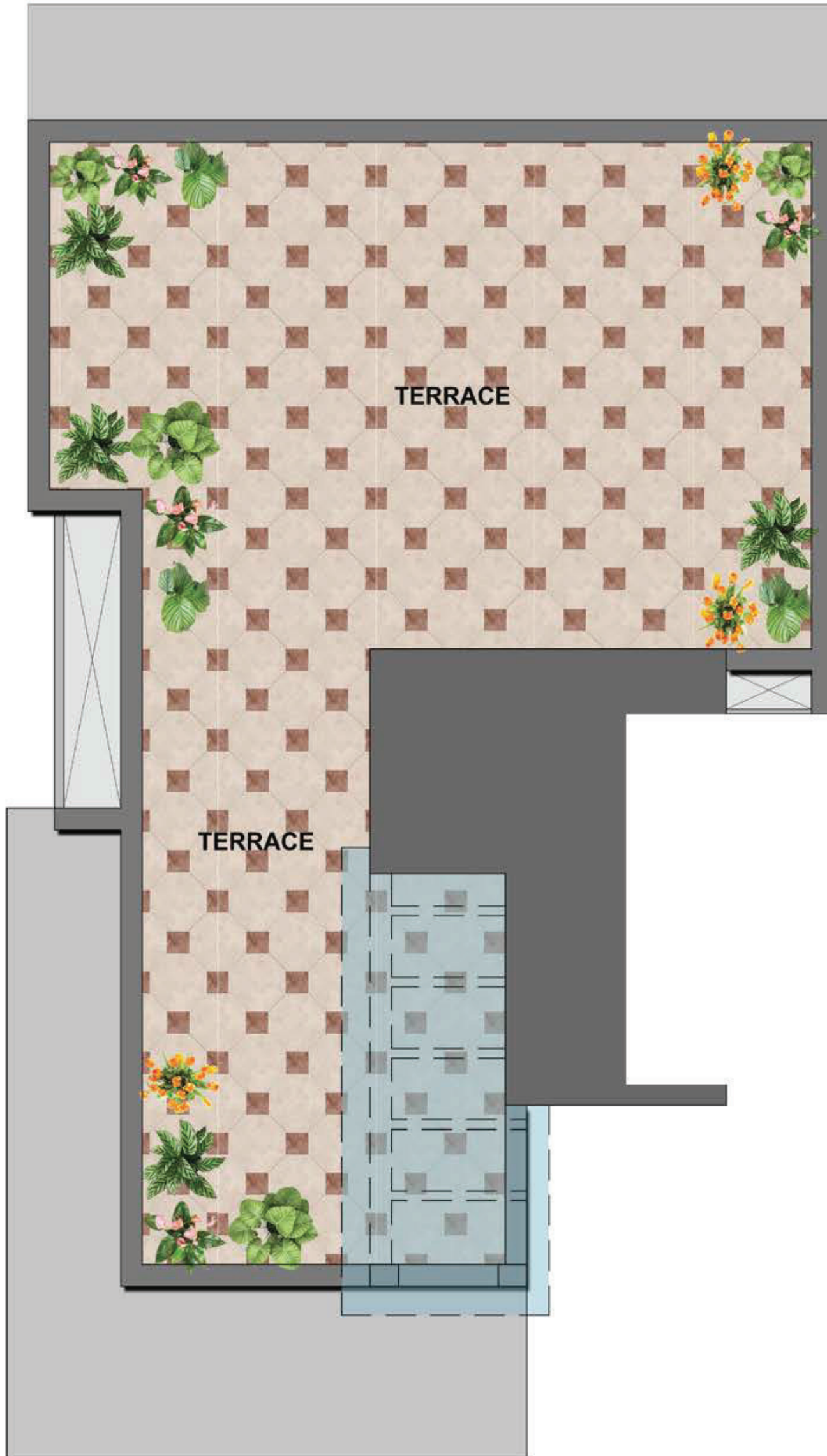
FIRST FLOOR PLAN



AREA STATEMENT

Mountain Breeze - 4 BHK (Type A)	AREA SQ.FT
Total Usable Area	926

TERRACE FLOOR PLAN



AREA STATEMENT

Mountain Breeze - 4 BHK (Type A)	AREA SQ.FT
Total Usable Area	883

GROUND FLOOR PLAN



AREA STATEMENT

Mountain Breeze - 4 BHK (Type B)	AREA SQ.FT
Total Usable Area	1101

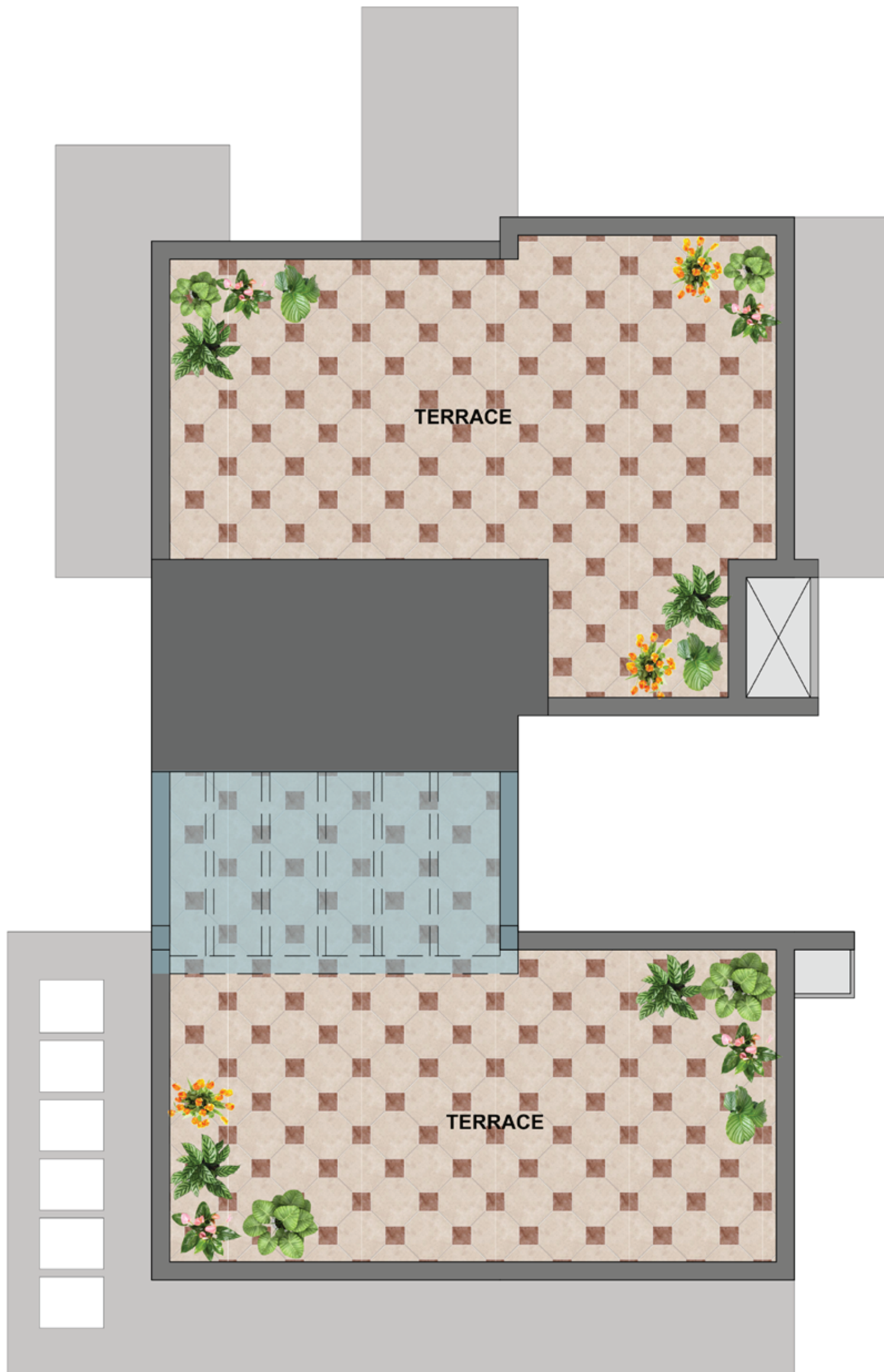
FIRST FLOOR PLAN



AREA STATEMENT

Mountain Breeze - 4 BHK (Type B)	AREA SQ.FT
Total Usable Area	1192

TERRACE FLOOR PLAN



AREA STATEMENT

Mountain Breeze - 4 BHK (Type B)	AREA SQ.FT
Total Usable Area	1068

Surrounded by nature.
Defined by elegance.



ACTUAL IMAGE


mountain
BREEZE
Built for weekend living



ACTUAL IMAGE

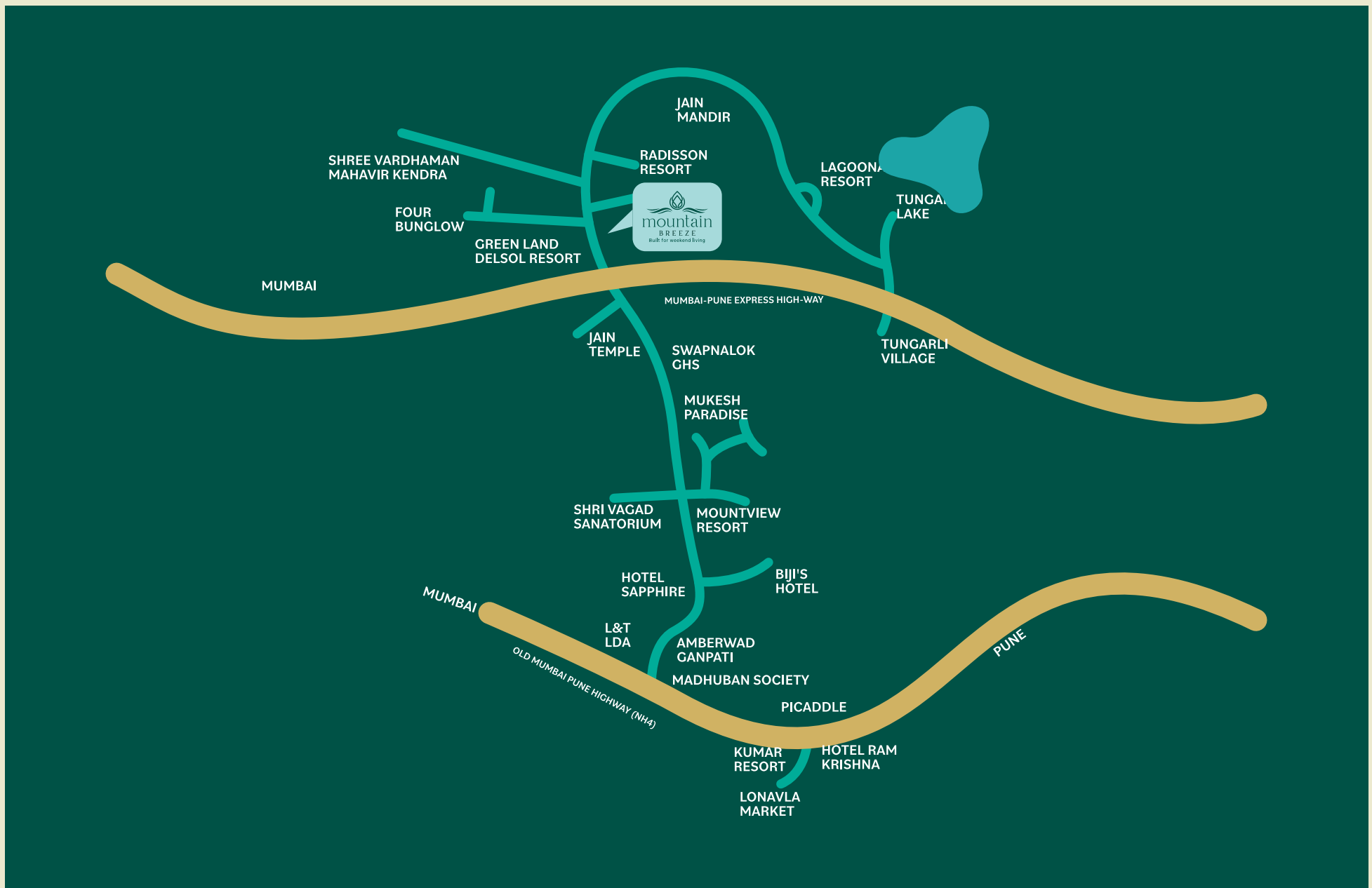


mountain
BREEZE
Built for weekend living



ACTUAL IMAGE

LOCATION MAP



Perfectly placed, effortlessly reached.

CLOSE PROXIMITY



Narayani Dham **5 minutes**



Expressway **8 minutes**



Lonavala Market **10 minutes**



Wax Museum **18 minutes**



Fariyas Hotel **5 minutes**



Jain Derasar **2 minutes**



Radisson Blue Hotel **2 minutes**



mountain
B R E E Z E
Built for weekend living

Site Address

Plot No. 06 to 13, Survey No. 17, Village - Tungarli,
Near Raddison Resort & Spa, Lonavala

OC RECEIVED | NO GST

Structural Consultant


Strudcom Consultants Pvt Ltd

Legal Advisor

Advocate Chetan M. Pandya

Architect

Kanhaiya Associates Architects

 **+91 70260 03005**

Disclaimer:

The contents of this brochure are purely conceptual and have no legal binding on us. The developers reserve the rights to amend the layout plans, numbers of floor plans, elevation, colour scheme, specifications and amenities etc.